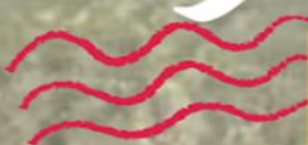




**SOUTH QUEENSLAND
OUTRIGGERS**

*Moreton
Island
Paddle
Safari*

 30 July 2022



Moreton
Island

Paddle
Safari

30 July 2022



SOUTH QUEENSLAND
OUTRIGGERS

OC6 Event only
Only 102 spots
available

\$150 per person
Includes-
3 meals,
island permits,
support boat subsidy
Saturday night
function



Register
via aocra website

Saturday night
entertainment

Come together for Camp fire,
Tropical shirt theme &
Live entertainment.

Byo



- Pillows • Sleeping bags
- Dry pack with spare clothes

All of the above are placed
in a waterproof bag and
clearly labelled with your
name on it as they will be
packed onto the support
boats for transport.



President's Welcome to the paddlers and supporters.

The SQ Zone committee are excited to welcome you all to the inaugural Moreton Island Paddle Safari. For paddlers 18 years and over. This paddle will see the crews departing Bribie Island and taking a direct line, 16km paddle across some of the most pristine waters in the Moreton Bay region. Arriving at the Moreton Island Wilderness camp situated at Bulwer, on the north end of Moreton Island. Once arriving at the beautiful location, lunch will be provided, and your camp set up. You will have plenty of time to immerse yourself in the Moreton Island lifestyle. With ample opportunity to enjoy the clear calm foreshore with swimming, snorkeling, fishing, sightseeing, canoe surfing and beach activities. Or enjoy a beautiful relaxing afternoon on the beach.

As we sit on the beach and watch the sun set over the Glasshouse Mountains, we will hopefully catch a glimpse of the local dolphins and turtles swimming by, to end a perfect day as we are amazed at the bright stars in the night sky above us.

The fully catered mouth-watering meal will be waiting for us in the evening, prepared in the camp kitchen. The perfect way to finish an amazing day with friends and family on and off the water. We will be ending the day on a magical note, with live entertainment around the campfire and settle in for a night of singing, dancing and laughter.

We are very much look forwarding to you joining us. Book early as we only have 102 places available. Make sure you don't miss out on what will be an event of fun, friendship and laughter with our paddling community.

All the best in paddling
Leigh Paine
Chief
SQ Zone President

The Moreton Island Paddle Safari is for OC6 craft only

Register

Via AOCRA website. Current AO rules apply.

Event is open to over 18-year-old only

Camp booking close at midnight, Sunday 3rd July, or as soon as 102 spots are filled. *Book early*

Registration page will have a Team Entry option only

Cancellation Policy

The event cancellation policies runs in line with the Moreton Island Wilderness Camp cancellation terms and conditions

- Cancellations 1 month (30 days) or less, prior to camp commencement date will forfeit the deposit amount in full.
- Cancellations as a result of the COVID-19 pandemic/ Queensland State Government's health directions, your deposit will be kept for a future camp bookings to be booked within 2 years of original date, less any already outlaid expenses that can not be credited e.g. food costs.
- All activities are weather and tidal dependent and itinerary may be changed or cancelled due to adverse conditions

Financial Disbursement of Entry Fee

\$150 per paddler

AOCRA receive \$2

SQ Zone received \$148

The \$148 SQ Zone receives covers:

- 3 meal package
- 1 night accommodation
- Moreton island permits
- Support boat fee
- Saturday night entertainment



**COVID Safe Site Measures
THIS IS A COVID-19 SAFE EVENT**

Moreton Island Paddle Safari is a COVID Safe Event.
This is an open-air event - observe social distancing at all times.

Public Health Warning

Please DO NOT enter if you have a fever, cough, sore throat, runny nose, or shortness of breath.

Paddlers are to adhere to Queensland Health Regulations regarding Covid-19 at the time of this event.

Everyone is responsible for COVID Safety!

Please maintain social distancing, sanitize your hands & equipment frequently so that we can all continue to enjoy paddling.

**** Any COVID-19 measures or changes will be monitored up to and including the day of the event. We will ensure any new measures will be communicated ****

Event Schedule for Moreton Island Paddle Safari 30/31 July 2022

Date	Time	Details	Distance
Saturday 30 th July	07:00	Unloading and rigging canoes – OC6	
	08:00	Safety Briefing	
	08:30	Paddle commences	16km
	12:00pm	Lunch	
	1:30pm	Afternoon activities – Water activities - Snorkelling, swimming, canoe surfing, SUP. Various land-based workshops, including drone flying and photography	
	6:30pm	Evening Entertainment – Tropical shirt theme and live entertainment round the camp fire	
Sunday 31 st July	07:00am	Pack up camp and canoes	
	08:30am	Leave	

Tide times – Moreton Island

30 July 2022

Low Tide - 04:55 - 0.59m

High Tide – 10:23 – 1.80m

31 July 2022

Low Tide – 05:28 – 0.58m

High Tide – 11:00 – 1.83m

Event Director: Leigh Paine

Please Note:

- Times are approximate
- Event Director has discretion to change or cancel the paddle, depending on weather conditions
- All paddlers must attend a safety briefing before leaving

Safety Requirements

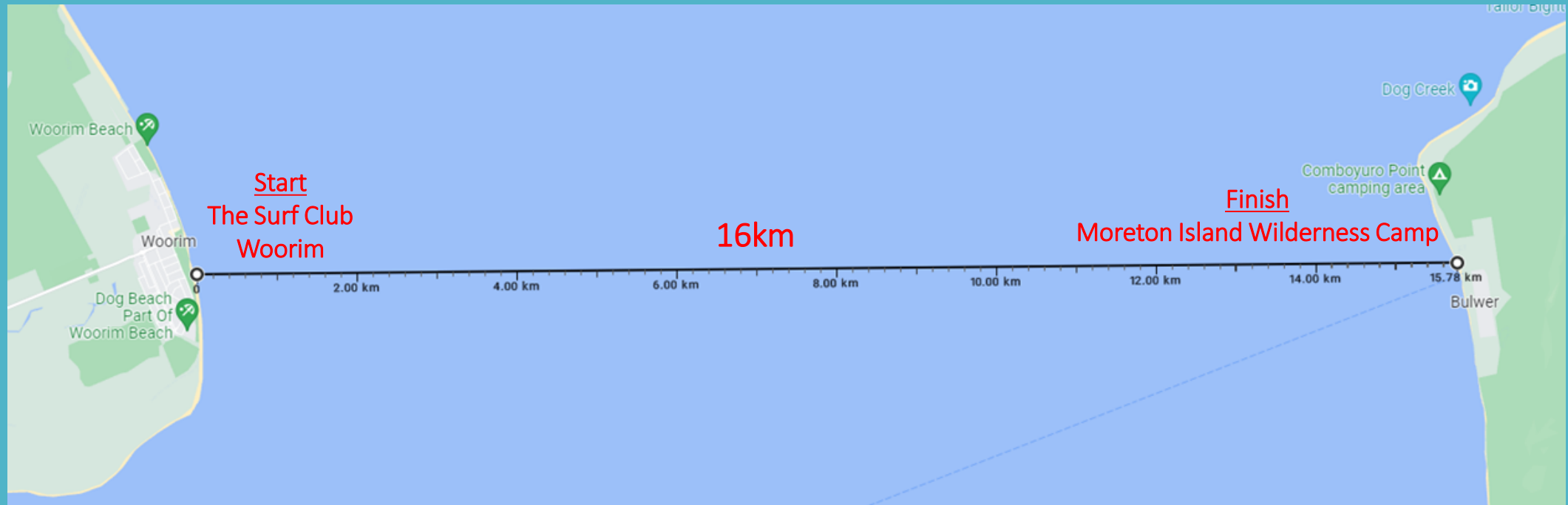
- PFD's (one per paddler) in all canoes
- Covers, at least 2 x Bailers and 1 x Secured Tow rope in all canoes
- At least 1 Spare blade per craft

Event Course

Start – The Surf Club, Woorim

Finish – Moreton Island Wilderness Camp

Distance 16km



Car Parking and Canoe Rigging

Trailer parking - Options for parking are being looked at- will be advised.

Car Parking at Surf Club

Canoe Rigging area has direct Beach access





WELCOME TO MORETON ISLAND WILDERNESS CAMP

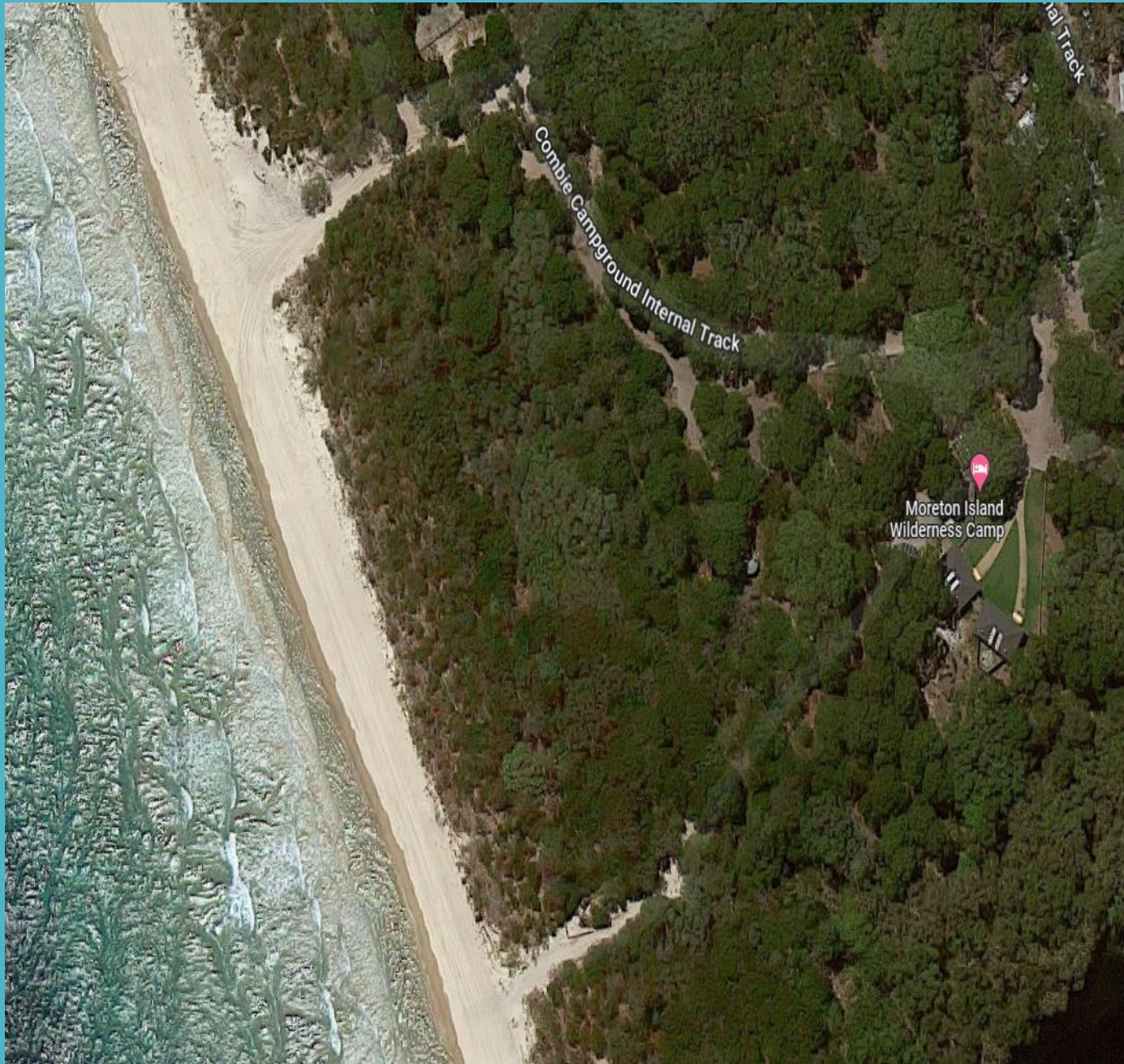
Across the water from Brisbane is one of the little known treasures of Moreton Bay. This unique sand island is the 3rd largest in the world, is 98% National Park and is only 35kms from Brisbane.

We pride ourselves in being light on the Earth and offer the perfect location to experiences what mother nature provides for groups, school camps, and family holidays. Experience all the joys of camping without any of the hard work and time consumption of setting and packing up your camp...simply arrive and relax, as everything is already set up for you.

Our camp is located metres from beautiful unspoiled beaches where the adventures are endless. There are shipwrecks to explore, wildlife to see, rock pools to observe, sand tobogganing in a desert, gazing at the starry night sky, swimming in crystal clear water on beautiful beaches and refreshing yourself in tea tree infused fresh water lakes. Moreton Island (Mulgumpin) really is a paradise!

[Moreton Island Wilderness Camp](#) | [Moreton Island Wilderness Camp](#)





Moreton Island Wilderness Camp

Moreton Island National Park
Comboyuro Point Campground
Bulwer

BYO

- Pillows
- Sleeping bag
- Dry pack with spare clothes

All of the above are placed in a waterproof bag and clearly labelled with your name on it as they will be packed onto the support boats for transport.

Only one medium sized bag per paddler